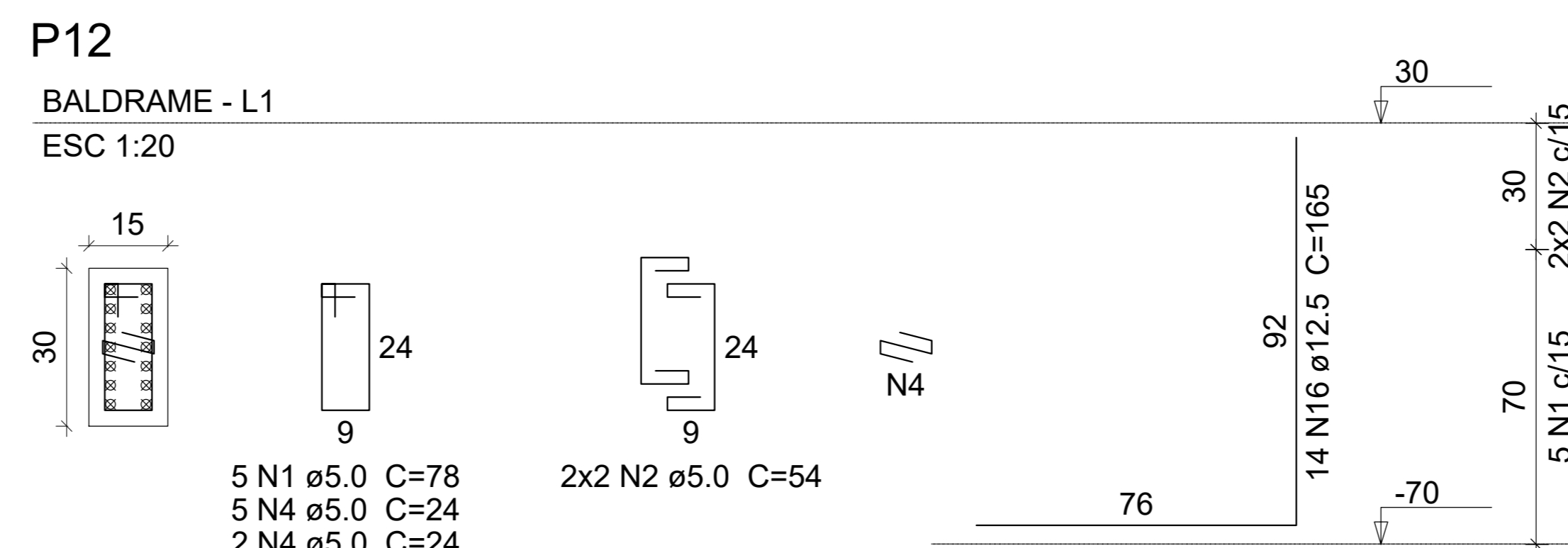
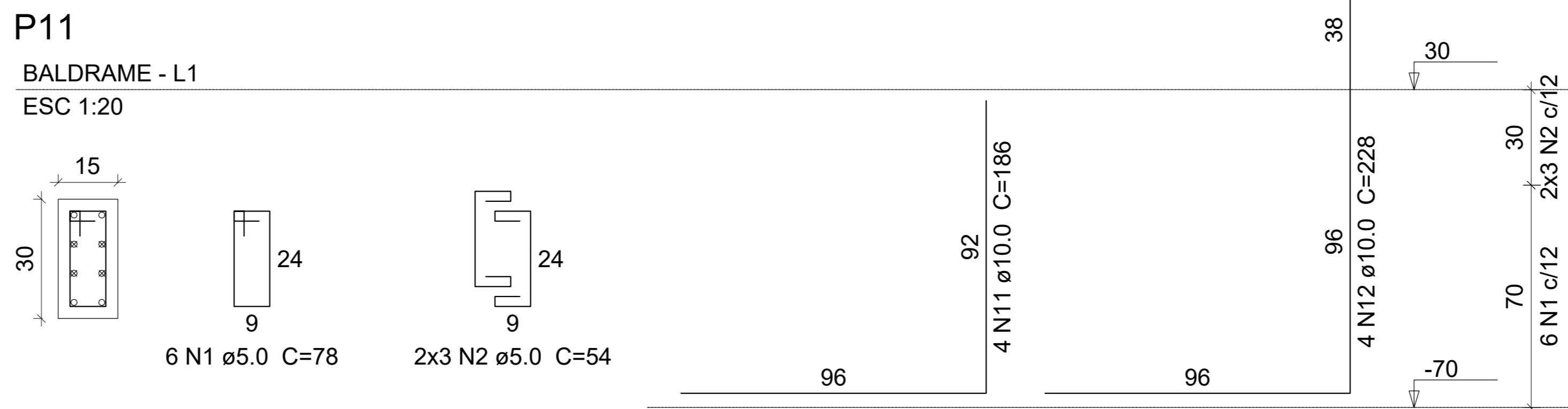
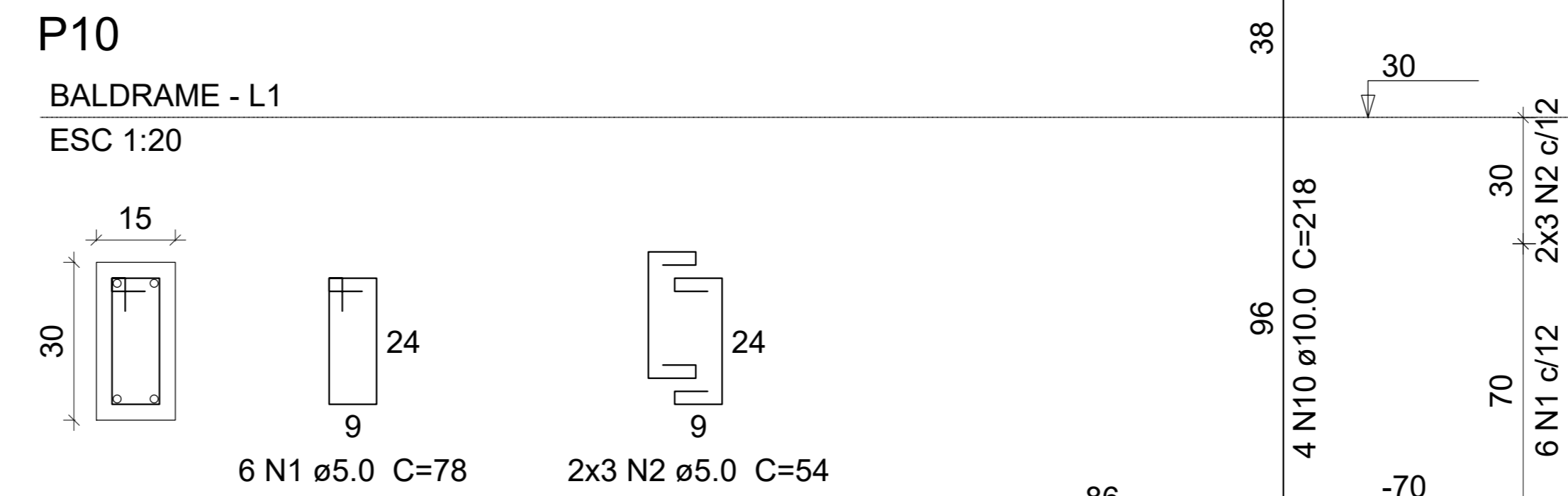
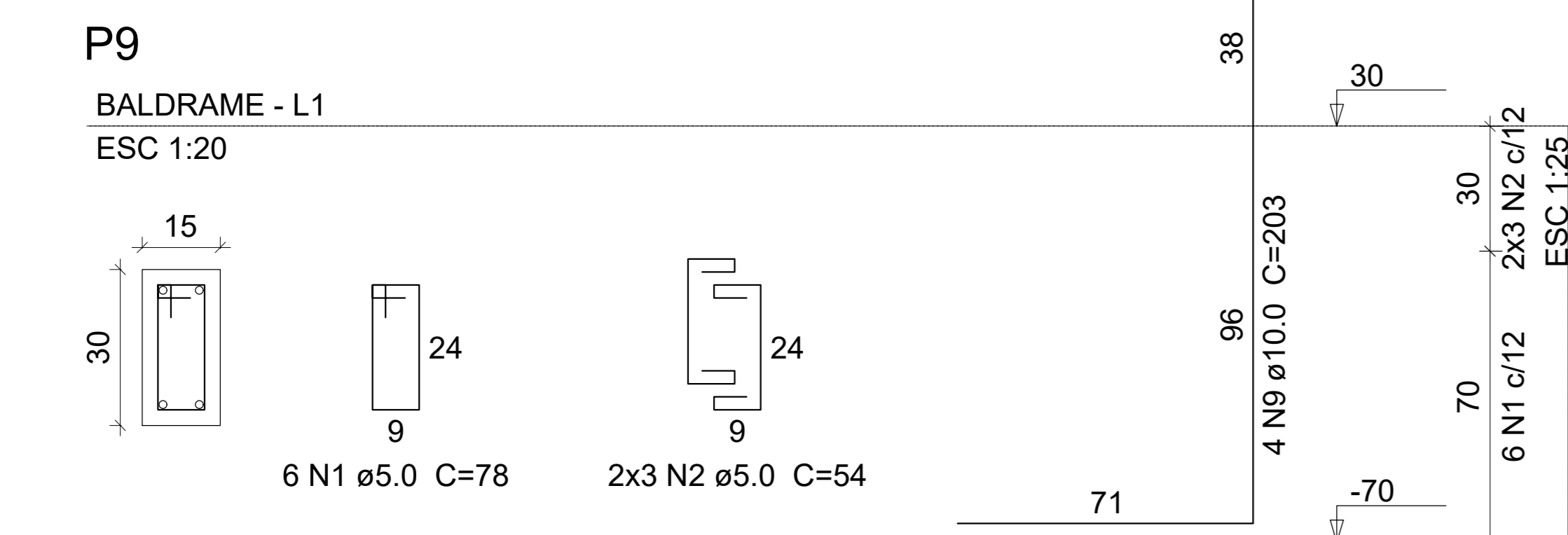
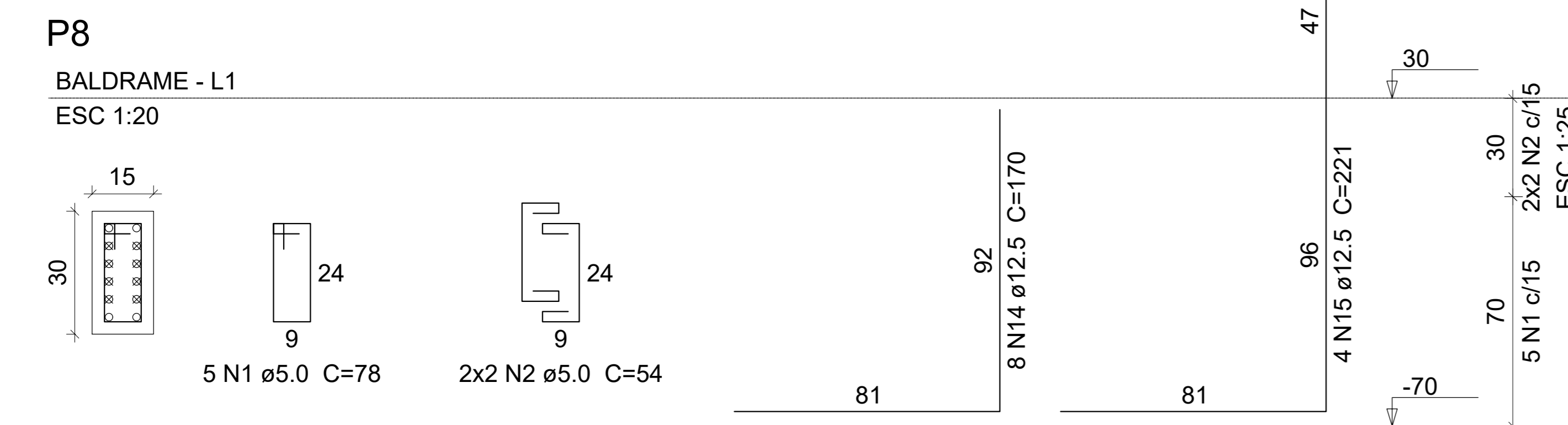
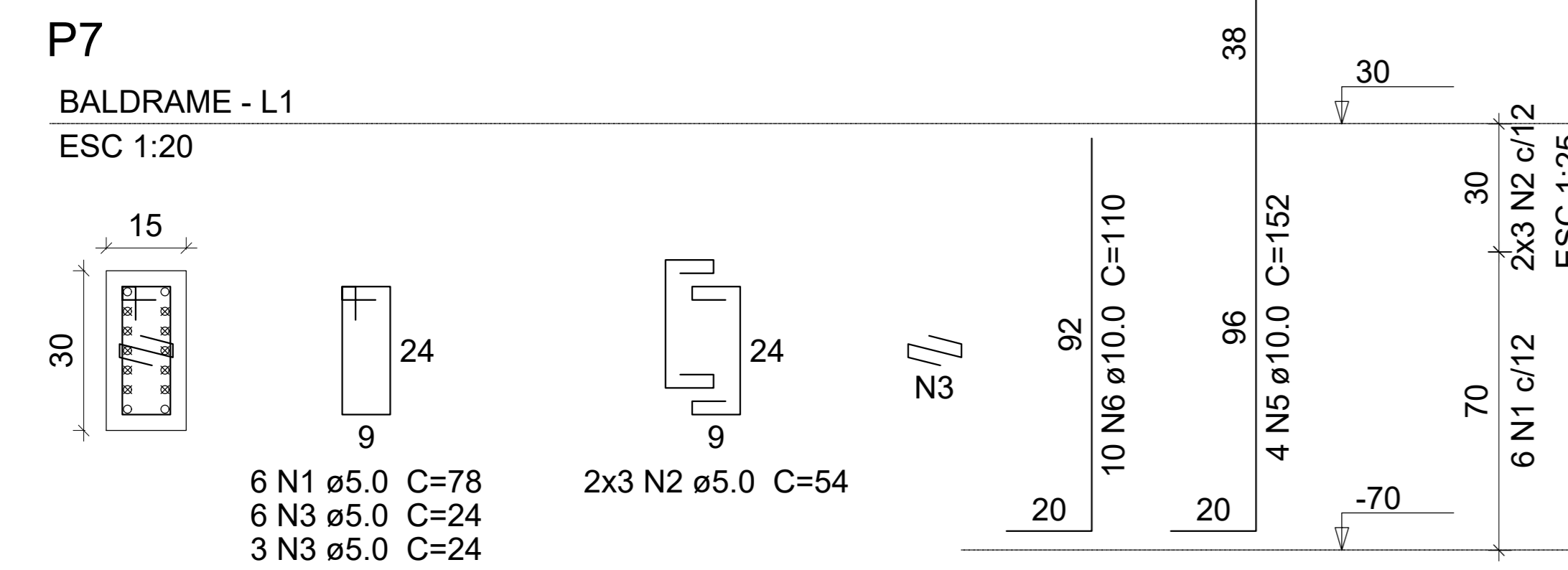
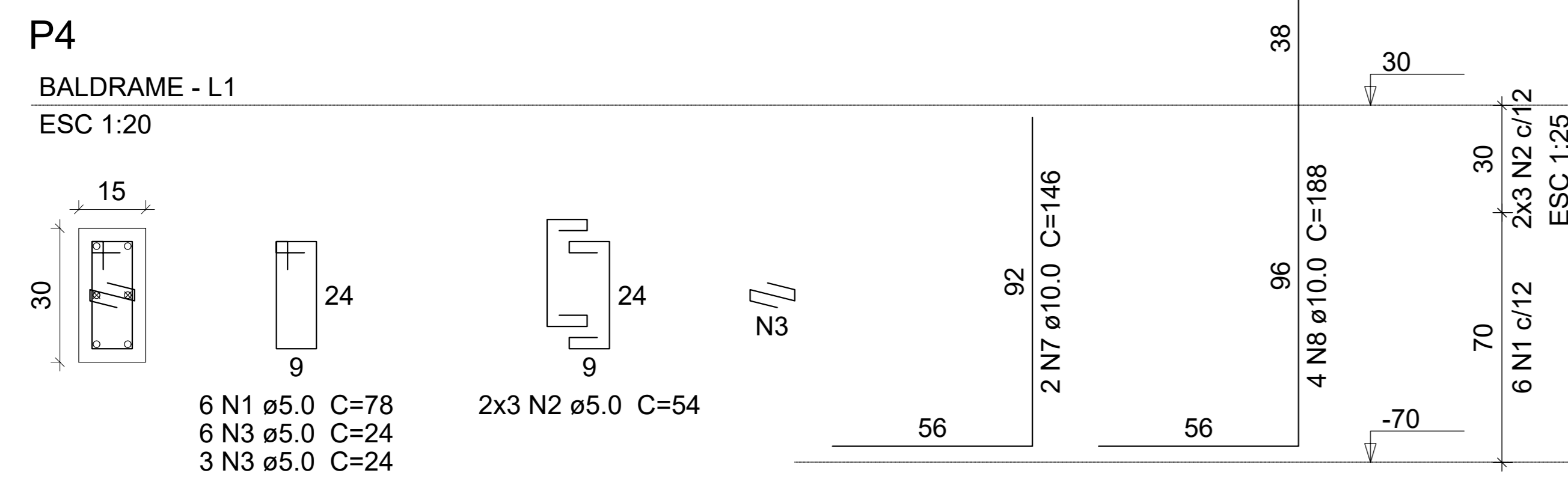
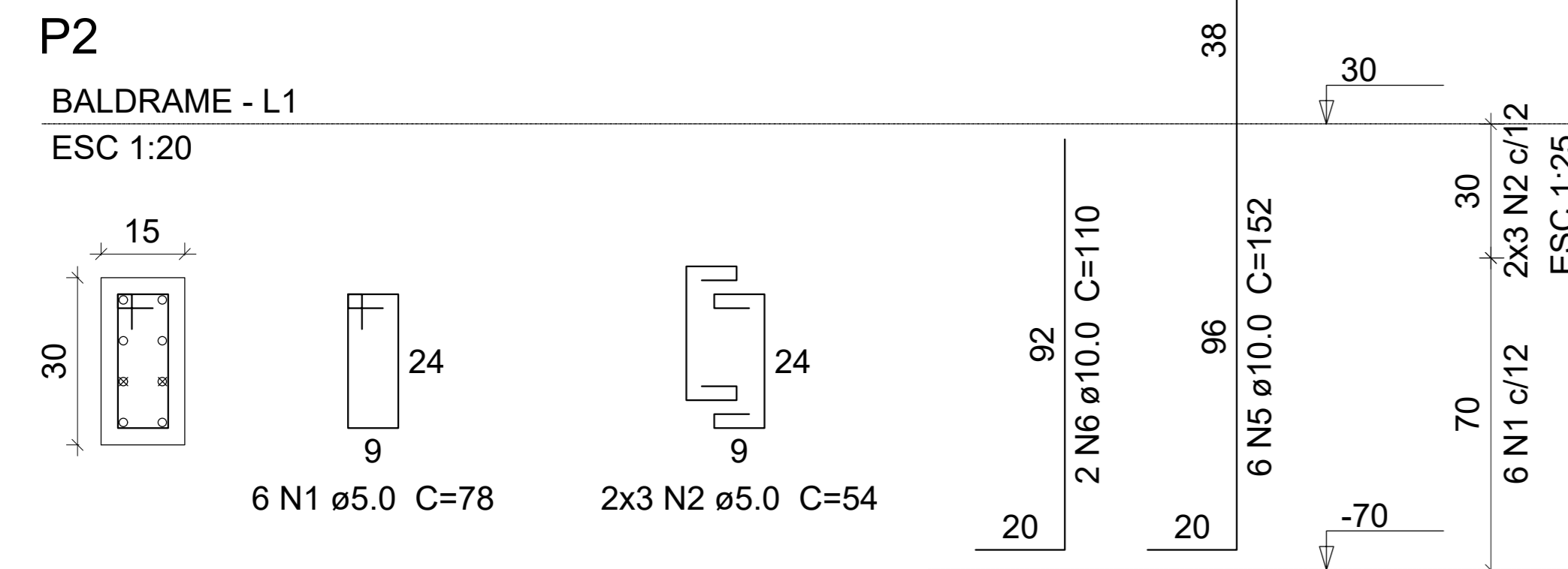
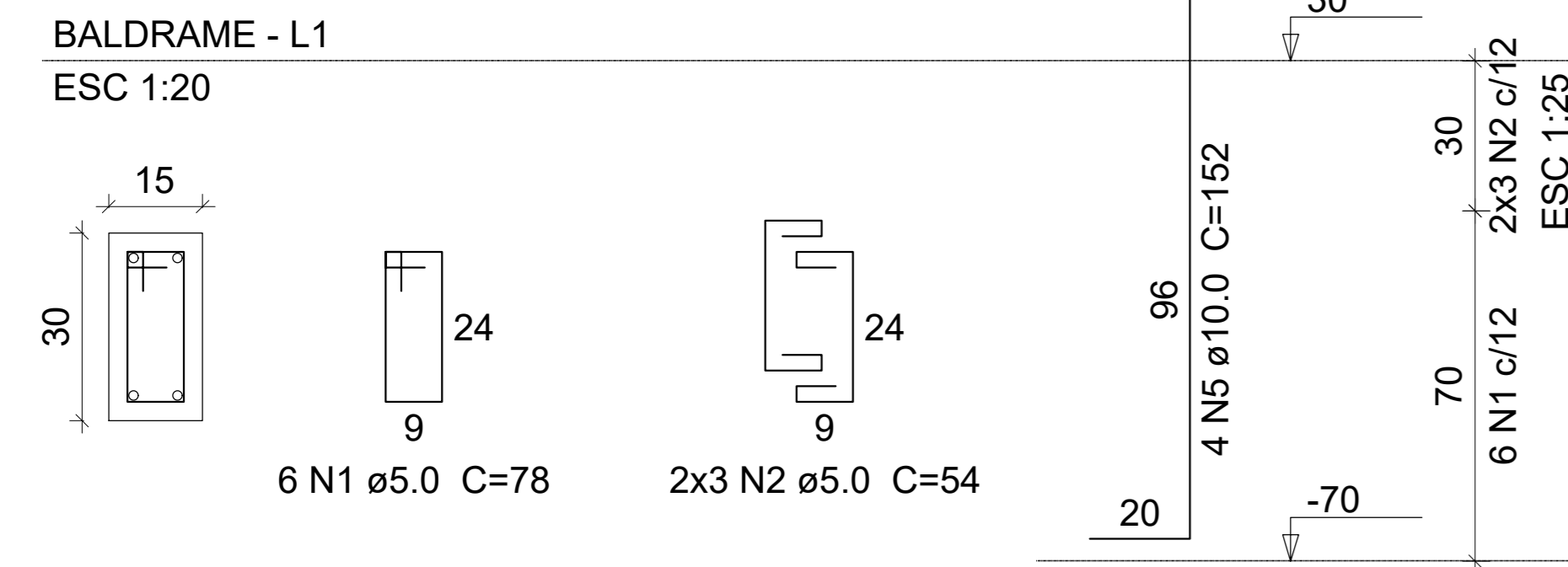
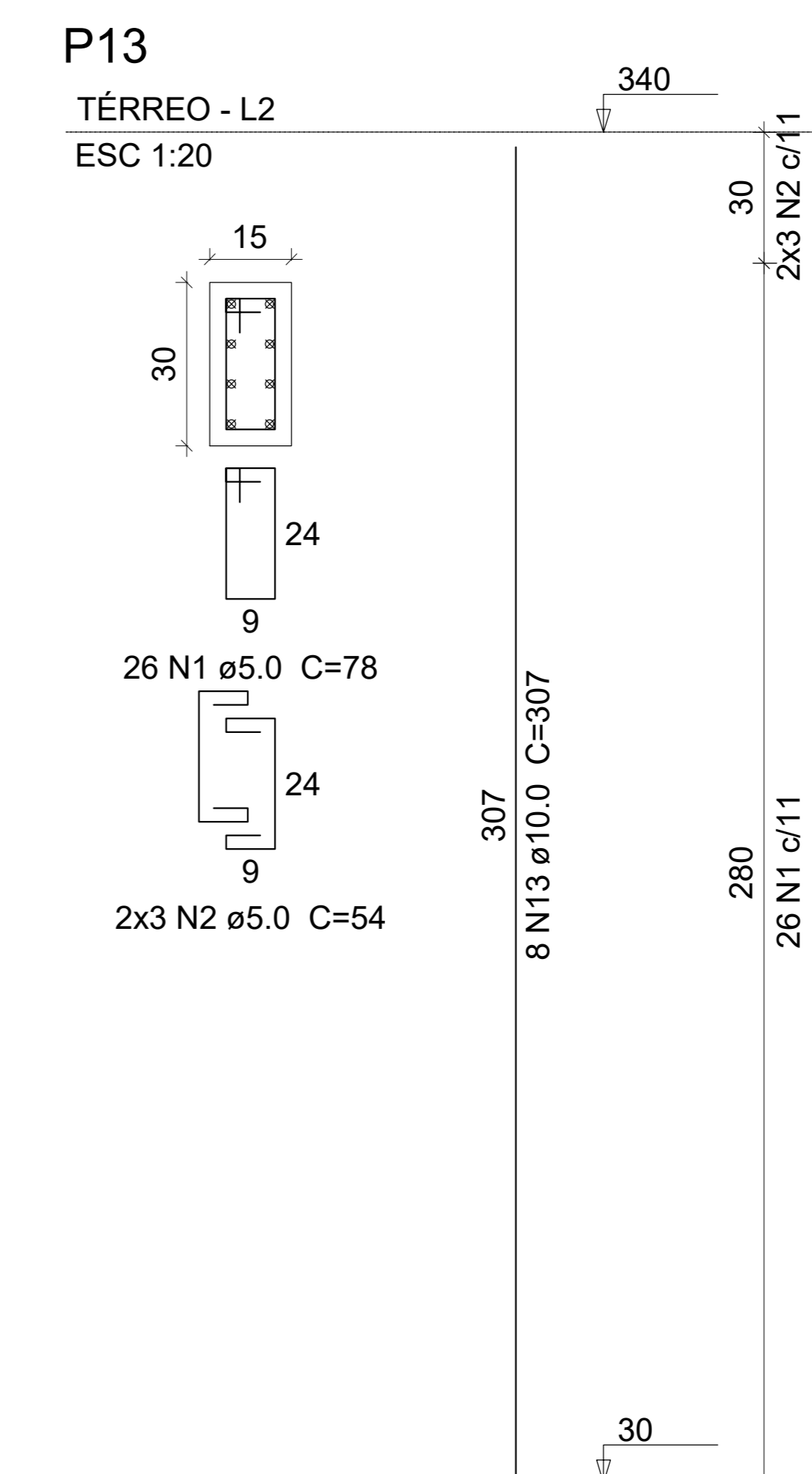
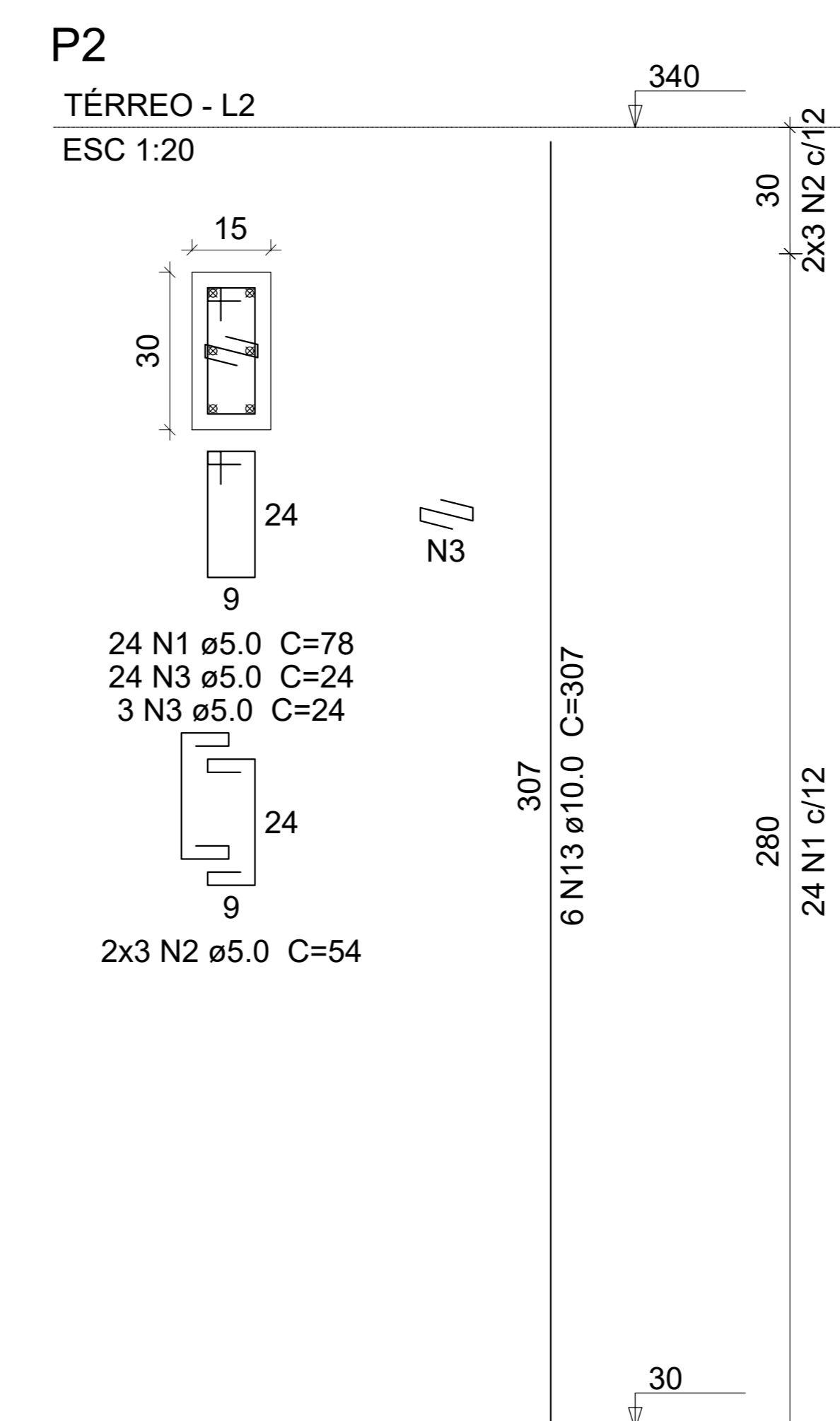
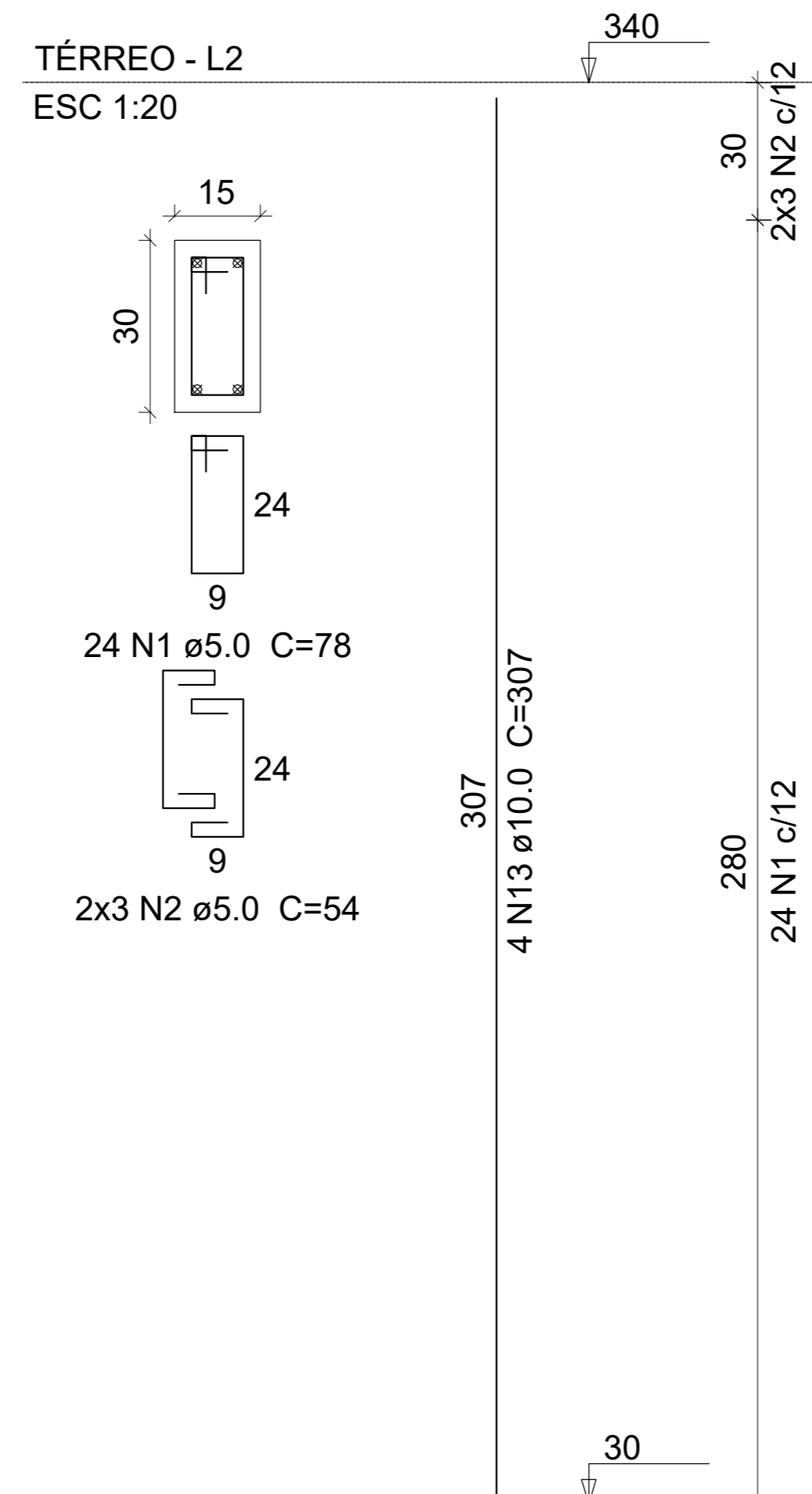


P1=P3=P5=P6



P1=P3=P4=P5=P6=P7=P8=P9=
=P10=P11



Relação do aço

Baldrame:	4xP1	P2
	P4	P7
	P8	P9
	P10	P11
	P12	
Térreo:	10xP1	P2
	P13	

AÇO	N	DIAM (mm)	QUANT	C.UNIT (cm)	C.TOTAL (cm)
CA60	1	5.0	360	78	28080
	2	5.0	140	54	7560
	3	5.0	45	24	1080
	4	5.0	7	24	168
CA50	5	10.0	26	152	3952
	6	10.0	12	110	1320
	7	10.0	2	146	292
	8	10.0	4	188	752
	9	10.0	4	203	812
	10	10.0	4	218	872
	11	10.0	4	186	744
	12	10.0	4	228	912
	13	10.0	54	307	16578
	14	12.5	8	170	1360
	15	12.5	4	221	884
	16	12.5	14	165	2310

Resumo do aço

AÇO	DIAM (mm)	C.TOTAL (m)	PESO + 10 % (kg)
CA50	10.0	262.4	177.9
	12.5	45.6	48.3
CA60	5.0	368.9	62.5
PESO TOTAL (kg)			
CA50		226.2	
CA60		62.5	

Volume de concreto (C-25) = 2.21 m³
Área de forma = 44.28 m²

PREFEITURA	BOMBEROS / NATURALINS	
FOLHA: 06/12		
PROJETO: ESTRUTURAL		
OBRA: REFORMA E AMPLIAÇÃO A CÂMARA MUNICIPAL DE FORMOSO DO ARAGUAIA - TO		
LOCAL: AV. JURCELINO KUBISTSCHEK		
ÁREAS	PROPRIETÁRIO	ASS:
ÁREA: 911.97 m ²		CÂMARA MUNICIPAL DE FORMOSO DO ARAGUAIA - TO
ÁREA IMPERMEÁVEL: 218.62 m ²		
ÁREA PERMEÁVEL: 693.35 m ²	ALTOR DO PROJETO	ASS:
		LUAN DE ALENCAR BORGES CREA 33086/0-TO
ESCALA: INDICADA	DATA: SETEMBRO/2017	ARQUIVO: DESENHO:
CONTEUDO:		